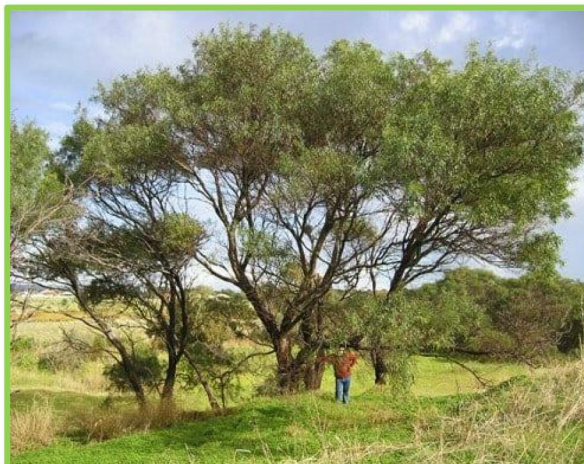




Acacia retinodes

Wirilda



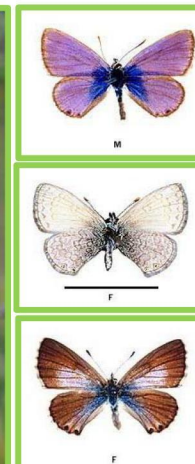
(Maslin, B.R., Worldwide Wattle)



(Leshanrahan, iNaturalist Australia)



(Murfet, D, Seeds of South Australia)



Adult male (top) and female (middle & bottom) Two-spotted Line-blue butterflies

(SA Butterflies & Moths)

Form: Medium tree **Height:** 5 – 8 m **Spread:** 3 – 7 m **Flowers:** Yellow **Type:** Globular **Flowering time:** All seasons

Ecological functions:  **Soils:** rock, sand, clay or loam; acidic, alkaline or neutral **Germination rate:** 4 to 6 weeks

Seed collecting: collect mature pods that are turning brown, with hard, dark seeds inside.

Seed treatment: place seed into a container and pour on water that has just been boiled. Soak overnight. Remove and sow immediately.

Sowing requirements: cover seed to its own depth with damp soil and firm gently. Then cover with a layer of gravel. Sow in late Spring-Summer.

Position: full sun, part shade.

Supplementary watering: minimal

Uses: low maintenance ornamental tree. Commonly used in mixed plantings, roadside verges, road batters and wide median strips as a barrier, wind-break and soil control. Food host to Two-spotted Line-blue (*Nacaduba biocellata biocellata*) caterpillars.

Notes: do not plant closer than 2 m to any sewer main or connection.

Sources: Botanical Gardens of South Australia; Seeds of South Australia; TreeProject, Trees For Life Tree Scheme: Grower's Handbook'; Atlas of Living Australia; SA Butterflies & Moths