



Goodenia albiflora

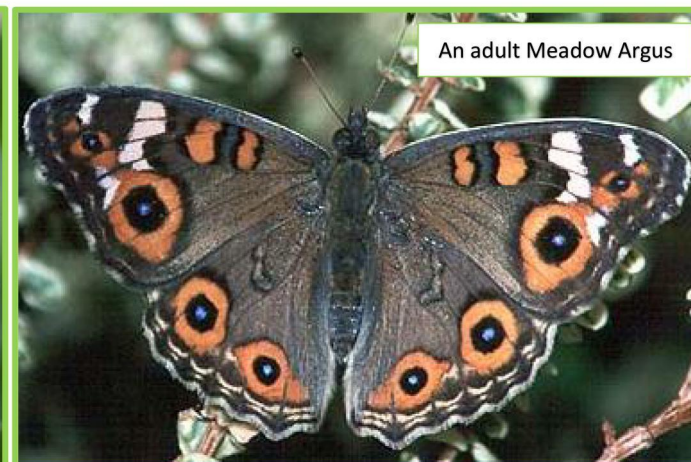
White Goodenia



(Seeds of South Australia)



(Lindorf, C, iNaturalist Australia) (Seeds of South Australia)



An adult Meadow Argus

(Hunt, L, SA Butterflies & Moths)

Form: Low shrub **Height:** 0.3 – 1 m **Spread:** 0.3 – 1 m **Flowers:** White **Type:** Fan-shaped **Flowering time:** Spring, Summer

Ecological functions:   

Soils: clay or loam; acidic, alkaline or neutral

Germination rate: 4 to 8 weeks

Seed collecting: observe the base of dried flowers. If they look mature and swollen at the base, nip off and fully dry in warm position. Brown seed will be released when dry.

Seed treatment: none

Sowing requirements: cover with 2 mm of damp soil and firm gently. Then cover with a layer of gravel. Sow in late Spring to Summer. Prefers well-drained soils.

Position: full sun

Supplementary watering: minimal

Uses: as a contrasting foliage plant. Plant singly for accent in borders, rockeries, nature strips and roundabouts or plant en-mass as low informal hedge. Food source to Meadow Argus (*Junonia villida calybe*) caterpillars and other native insects.

Notes: difficult to grow from seed but easier from rhizome and cuttings.