



Stemodia florulenta

Blue Rod



(Seeds of South Australia)

Form: Low shrub



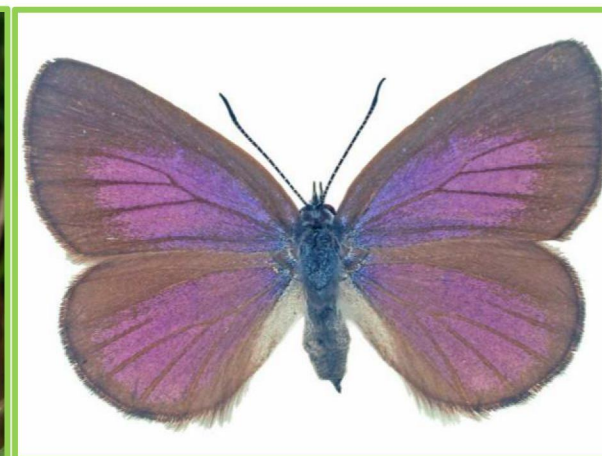
(Seeds of South Australia)

Height: 0.4 – 0.5 m **Spread:** 0.4 – 0.5 m



(Murfet, D, iNaturalist Australia)

Flowers: Blue



Adult
Rayed
Blue

(Grund, R, Butterfly Conservation SA)

Type: Raceme

Flowering time: Spring

Ecological functions:



Soils: sand, clay or loam; acidic, alkaline or neutral

Germination rate: 2 to 4 weeks

Seed collecting: collect seeds from brown, mature fruits on plant.

Seed treatment: none

Sowing requirements: sprinkle seeds on top of damp soil, cover with soil or fine gravel.

Position: full sun

Supplementary watering: minimal

Uses: small native shrub, produces bright blue flowers in Spring. Faintly scented and attracts butterflies. Food host to Rayed Blue (*Candalides heathi heathi*) caterpillars.

Notes: some individuals produce both blue and white flowers.